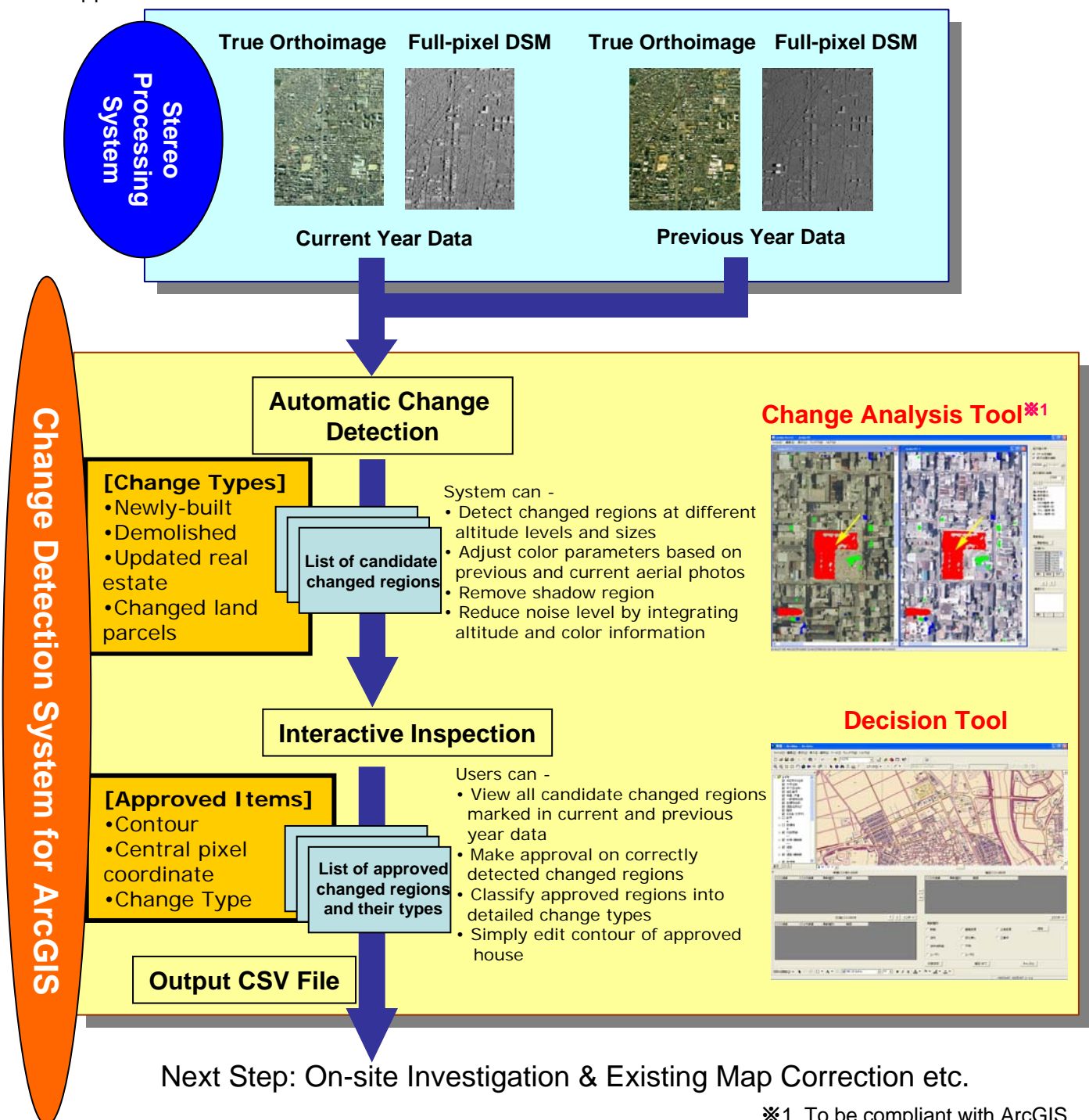


RealScape Change Detection System for ArcGIS

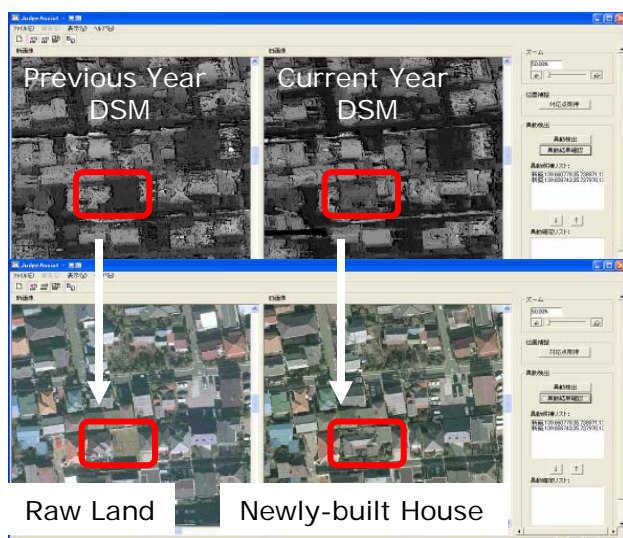
RealScape Change Detection System for ArcGIS utilizes 3D data output from RealScape Stereo Processing System and automatically detects change of terrestrial objects and terrains.

- By analyzing altitude and color information, RealScape automatically detects changes such as newly-built, demolished and updated real estates and land parcels.
- Users can leverage RealScape Decision Tool to inspect changed regions and then assign change classification.
- RealScape Decision Tool can be integrated with and executed with other ArcGIS applications.



Use Case 1. Real Estate Change Detection for Tax Assessment

Automatic detection of changed real estates over an annual period.



Automatic detection of altitude change by comparing two full-pixel DSMs between previous and current years



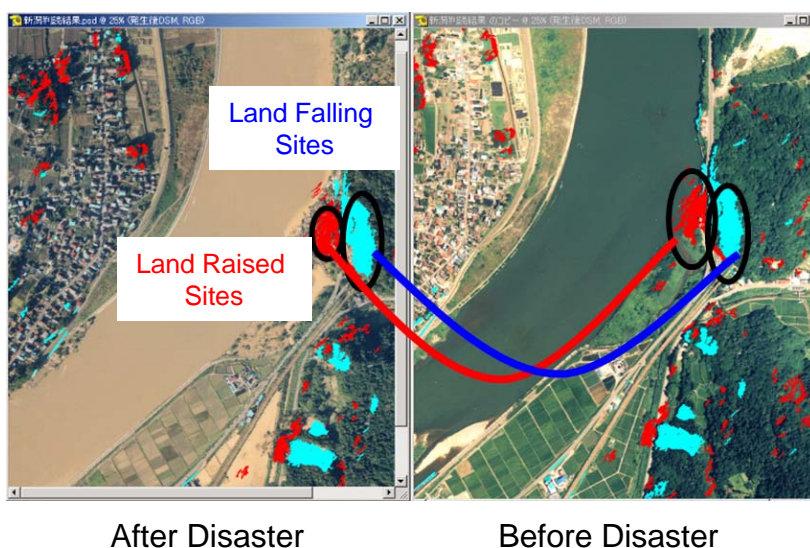
Previous Year True Orthoimage → Current Year True Orthoimage



Automatic detection of color change by comparing two true orthoimages between previous and current years

Use Case 2. Disaster Site Investigation

Automatically detect impacted land sites by comparing two full-pixel DSMs before and after a disaster



Assist in quickly and correctly specifying the site and scale of damages such as demolished real estates, landslides, collapsed ground etc. after a disaster

Recommended System Specifications

CPU : Pentium4 2GHz or better
OS : WindowsXP SP1 or SP2

Memory : Above 1.5GB*1
HDD : Above 80GB

*1. The required memory may change according to the image size.

NEC System Technologies, Ltd.

Sales Department, Technology Solution Sales Division
TEL +81-6-6945-3824
Email realscape@var.necst.nec.co.jp
URL <http://www.necst.co.jp/product/rs/english/>

- RealScape is a registered trademark (in Japan) of NEC System Technologies, Ltd.
- Windows is the worldwide registered trademark of Microsoft Corporation.
- Core Xeon and Core2Duo are the worldwide registered trademarks of Intel Corporation and its affiliated companies.
- ArcGIS is the worldwide registered trademark of ESRI.
- All other trademarks mentioned in this catalogue are the property of their respective owners.
- The stereo matching processing in RealScape makes use of the earth navigation technology developed by NEC Internet System Research Laboratories.
- Please note that the content of this catalogue may be partly changed in certain specifications and design without announcement.
- The content of this catalogue was last updated in June, 2008.